

## **SPD Course testimonials:**

"Before I started Module One with Cynthia, I was going through a mini-crisis. I just moved back to Vermont with my husband, was trying to start a company, and just felt like my world was turned upside down. I placed myself in survival mode as "my plan in life" wasn't working out as I thought. I was wondering all the time why I was feeling anger or sad, I was putting too much pressure on myself to accomplish things, my relationships with people were not as connected or stable as I wanted them to be, and I was not thinking clearly on decisions I was making.

As I took the journey through module one, it really opened my eyes and heart to what was around me. Life is what you want it to be and you have to truly believe that. I learned the tools needed to slow down!, stop being so serious, laugh and be happy, ground my thoughts and energy, release energy that wasn't mine, build my Aura, connect to my higher self, connect to mother earth, protect myself from other people's energy/thoughts, and manifest.

It was crazy how things quickly changed - I thought clearly on all my decisions and I had confidence in the decisions I were making. The questions I was going crazy over trying to find the answers came more easy to me and I was taking paths I normally wouldn't. The most important thing I relearn was to love myself and just be happy...life is what you want it to be." K.A.- VT

"Module One is a wonderful class. The tools we learn are invaluable, I use them almost everyday. I feel emotionally stronger and more centered in my truth. The setting is nice too, I love that Cynthia encourages an amusing and playful attitude. It is a safe place with no pressure. So happy with what I have learned and certainly will be going back for module two!" K.R.- VT

When I entered Module 1 I was well into some major life transitions—starting the process of divorce, leaving my business of 6 years, looking for a new job—big, stressful stuff, especially with two kids. The first thing I want to say is I think the tools have played a big role in helping to keep me from getting dragged down into the trenches of stress. One of my favorite tools for that is the sticky rose. When issues flair in the divorce I can use the sticky rose to help reset me to my own frequency, cleaning out those negative thoughts that inevitably creep in. S.M.- Vermont

**Rainbow Institute**  
[www.rainbowinstitute.com](http://www.rainbowinstitute.com)



**Cynthia Warwick Seiler**  
**Soul Purpose Development**  
**Specialist**

19 Church Street #8  
Burlington VT 05401  
[info@rainbowinstitute.com](mailto:info@rainbowinstitute.com)

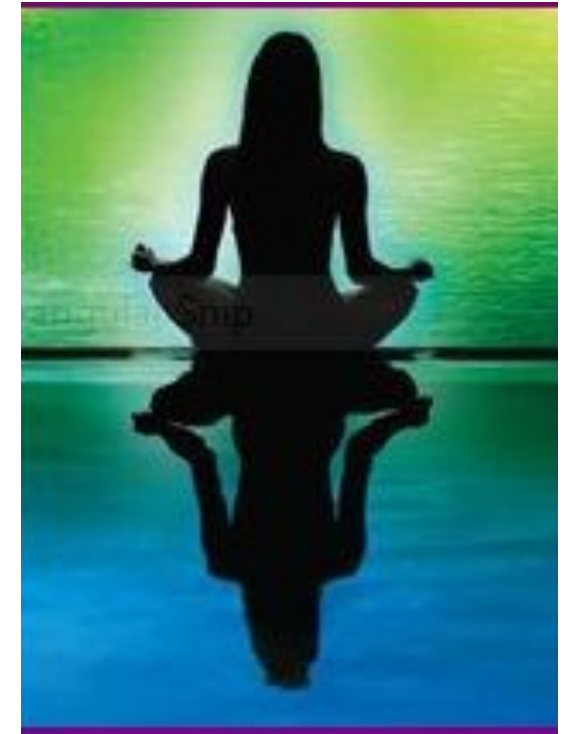
Rainbow Institute is a teaching and meditation center for well being, intuition, spiritual awareness, and holistic healing.

Cynthia is a metaphysical teacher who specializes in soul purpose development, awakening the light body, spiritual healing, and women's essential energy healing classes. She has adept knowledge in ACIM, sacred geometry, and is a highly skilled professional intuitive as well as a Soul purpose/life coach with many uniquely designed services and programs for Soul Purpose.

The Soul Purpose Development Curriculum, Counseling, and One to One Soul Purpose Coaching Programs and all of their resources are an exclusive copy right of Cynthia Warwick Seiler, Cynthia is the course developer and teacher. Contact her directly to receive notice of the next upcoming Module 1 start date or to learn about the full range of specialized programs.

# **Soul Purpose Development**

**A unique transformational &  
empowering intuitive  
curriculum**



**Rainbow Institute is a teaching and meditation center for well being, intuition, spiritual awareness, and holistic healing.**

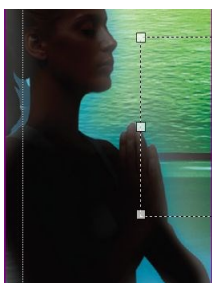
[www.rainbowinstitute.com](http://www.rainbowinstitute.com)

**802-540-0247**

***In a perfect world if I could have the life of my dreams and deepest desires how would I cultivate it? Where may I learn tools to expand my intuition and hold space for my passions? Could these tools assist me to create a lifestyle that brings my spirit alive and empower my greatest pathway choices?***

**Soul Purpose Development is a highly fulfilling course that is fun, uplifting, effective, empowering and effortless to master.**

Soul Purpose Development course (SPD) is a highly specialized course which offers you a holistic metaphysical toolset that you may use daily to create new vibrations in all aspects of your life. These are easy everyday tools that assist you lifelong to fulfill your own purpose. SPD is a "spiritual toolkit" derived from over 20 years of metaphysical study. It is a course that teaches a student to grasp their own intuition and use it to arrange ones life experience for both mind and body. Students learn to identify, center, and empower their own soul's truth and journey within our multi-dimensional colorful world, and have fun with it.



### **IS THIS CLASS FOR ME?**

The Soul Purpose Development curriculum is for anyone who would like a holistic, soul-based toolset. While the personal reasons for taking this course varies from student to student, the tools SPD offers are easy to master, empowering, and diversified, all student levels are served. Each student learns how to apply an intuitive toolset to individual goals, personal healing, artistry, and the cultivation process for a natural soul based lifestyle in an empowering way.

SPD's unique approach to spiritual freedom and self acceptance assists each student to self-validate and fortify their own inner knowingness which feels more authentic, enriching, and sustainable as lessons unfold. This course structure enables each individual the soulful process of expansion where students create a safe platform to empower their own wisdom in alignment with their highest creative vision. Soul Purpose Development is a class like no other, think of it as embarking upon a magical journey of finding what serves the authentic inner you, and loving every step you take!

## **The Soul Purpose Development Curriculum :**

*Enroll in one module at a time. Modules are offered in person, over the telephone, or via mp3 recording. Payment plans are available.*



**Module 1: Awakening intuition for personal empowerment, self-healing, and learning fundamental tools necessary for the cultivation of process of goals dreams and visions for a soul-centering lifestyle.**

Module 1 is the foundation platform class that teaches you a toolset that you can use every day. Learning these self-supporting energy tools helps you to build upon a frame work for the light in your body to actualize. In M1 you practice centering and aligning to step out of struggle and effort. You learn grounding, energy clearing, energy management and how to clear out distractions, limitation and doubt. You learn about your spiritual anatomy and utilize intuitive tools to awaken your passion, purpose and self-expression, having the total self without fear. In M1 we begin creating a vision and a cultivation process to trust the heart's innate intelligence. **12 classes fee \$240**

**Module 2: Setting and maintaining sacred space, working with guides, creativity and the creative process, sacred geometry, being a visionary, actualizing and the co-creation of soul purpose.**

Module 2's focus is on learning how to create and hold sacred space for yourself, your creations, and the development process you will need to actualize your dreams. In M2 you further awaken the hearts song and strengthening the hearts multi-dimensional grid systems. **12 classes fee \$240**

**Modules 3 & 4: The sacred geometry of relationships.**

**Constructing space with persons, places, things & spirit based on the harmonic alignment of soul purpose.** Modules 3 & 4 focus on the actualization process for the aspects of life to harmonize with the hearts intelligence. Here we work with universal fields of re-establishing, renewing and aligning relationships with soul purpose directives. We work with emotional processing and the dynamics of working with difficult behavioral relationships. You learn tools for clearing karmic cycles to create space for creative path-building. You regain the focus for creating sustainable structure so the aspects of life may thrive. **Module 3 is 14 Classes, Module 4 is 11 classes they are taken together as 25 classes fee \$500.**

**Modules 5: Renewal with Source. Healing alignment and expansion of universal concepts to awaken the I AM Presence:**

Module 5 looks at a deeper divine understanding and toolset for healing, holding space for vibration, frequency, and infusing finer light within creative zones by exploring divine principles. In M5 we foster a greater intuitive expanse & play with the platform of all time and all space as a universal instrument for soulful healing and creativity. **Module 5 is 10 classes for \$200**

**Module 6: Re-awakening the soul relationship with the spirit of the Earth Mother,** Unifying and nourishing spirit, becoming one with the brilliance of life. Awakening a deeper understanding and healing with the Earth Mother. Gifting Soul Purpose to the Earth and hearing her song for you. **Module 6 is 10 classes for \$200**

## **Awakening the dream body is the fastest way to heal....**

Students have taken SPD for a broad spectrum of reasons, some of which were: Create a pathway for change or new way of life. The desire to authenticate and live an intuitive holistic lifestyle. Heal from difficult relationships. Learn how

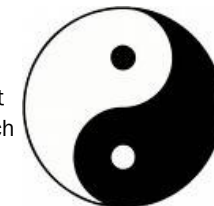


to empower healthy boundaries for wellbeing. Become senior to challenges. Cultivate a homecoming on large issues. Learn how to cultivate ones dreams in grace with the intent to get out of struggle-effort-and-warrior on creativity and creative expression. Learn how to handle doubt and distraction. De-stress and self-validate.

Learn an effective process for actualization. Learn how to hold space and empower artistry and artistic endeavors. Heal from trauma and acute body sensitivity. Desire to experience the psychic phenomenon from a mindful holistic place. Raise the vibration of mind, body, spirit. Develop the light body and sacred geometry. Awaken spiritually. Learn how to listen and act upon ones heart's intelligence. Learn how to bring soul purpose to all aspects of life. Cultivate a safe platform where one is living passion and purpose with ease. Awaken thy self to mastery.

### **How do I get started?**

First: Build your unique intention for taking the course, truly connect with your hearts intent. SPD begins with Module 1: Building upon personal empowerment, fortifying a balanced center, and learning soul based tools to self heal. Are you ready, willing, and able to commit to yourself that deeply? If yes sign up for the next M1, you will be glad you have taken this course. It is your investment in yourself that will last lifelong of which this course supports. Call 802-671-4569 to get started.



**Each SPD Module is offered independently and is designed to be highly affordable, payment plans are available. The Rainbow Institute classroom is located on Church Street in Burlington. SPD is also available live via telephone or via MP3 for students who are not local .**